

# Electronic Spare Parts Catalogue

## SVGViewer installation guide



### General

To browse exploded views inside INVACARE Electronic spare parts catalogues, you must have SVG viewer installed in your computer. Indeed, these exploded views are using SVG file format (Scalable Vector Graphic) which is a very powerful format allowing you to zoom very deep in details without losing quality. SVG viewer pluggins is required to consult these exploded views in Internet Explorer browser.

If SVG viewer is not installed in your PC, you'll see an error message like this example, instead of exploded views.

Catalogue of parts Documentation Search  Parts catalogue by Invacare®

Invacare® Denmark  
 + POWERED MOBILITY  
 + MANUAL WHEELCHAIRS  
 + LIFTERS  
 + BEDS  
 + RESPIRATORY  
 + PRESSURE & POSTURE CARE  
 + ALL PRODUCTS AVAILABLE  
 + Action3  
 + Assist  
 + Auriga  
 + Chassis (10)  
 + Seat (20)  
 + Seat system  
 + Front Wheels (50)  
 + Rear Wheels (55)  
 + Propulsion (60)  
 + Controls Drive (70)  
 + Other Options & Accessories (98)  
 + Rea Azalea  
 + Rea Bellis  
 + Kuschall® Champion  
 + EC-track  
 + E-Fix E25/E26  
 + E-Motion  
 + Rea Focus  
 + K-SERIES  
 + Meteor  
 + Mirage  
 + Robin  
 + SB750  
 + SB910  
 + Scalamobil S30/S31  
 + Rea Spirea 2  
 + Storm3  
 + Tornado  
 + Typhoon  
 + Viamobil ECO  
 + Viamobil  
 + Zephyr

Seat system  
Page 1 from 1

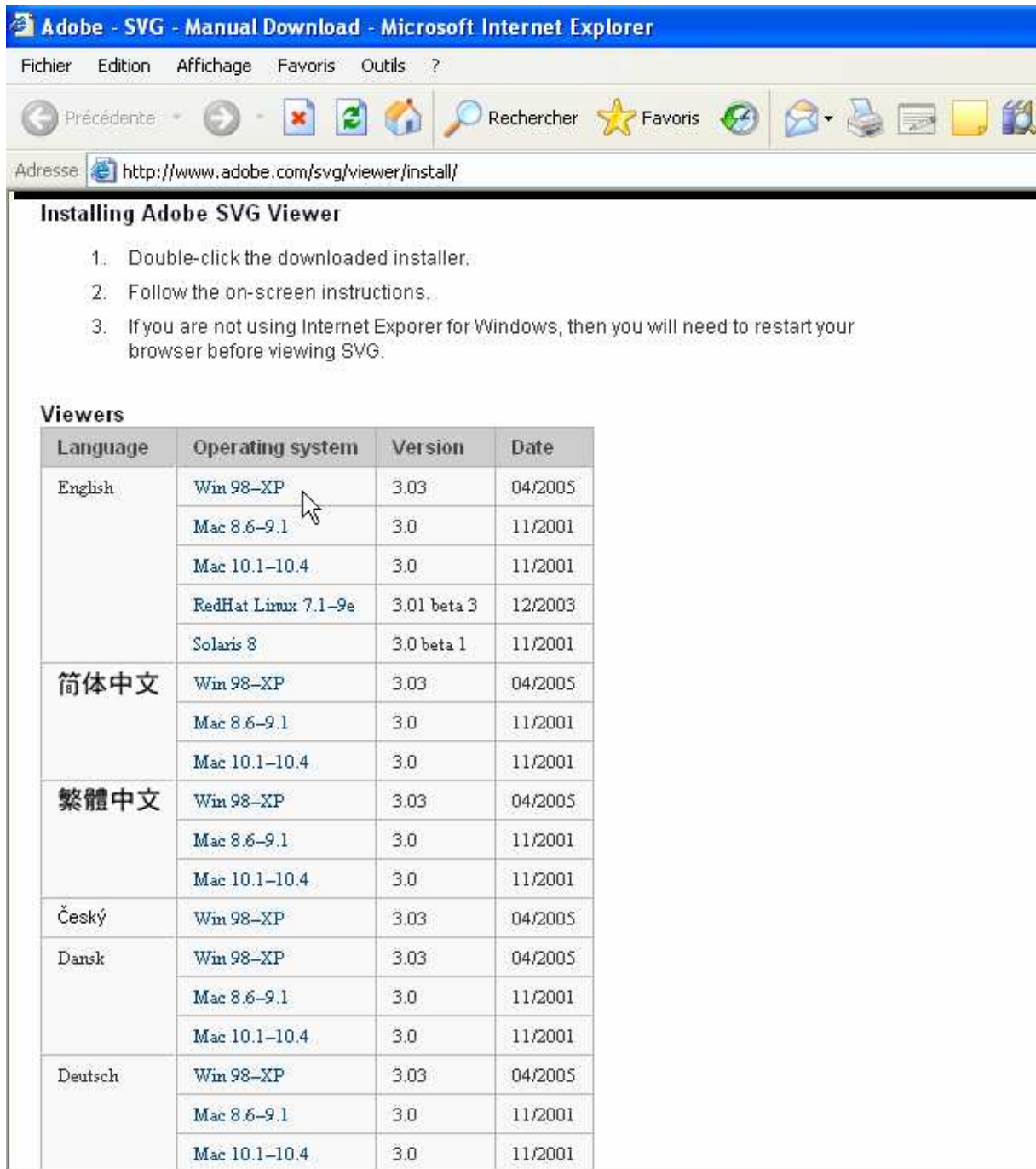
**No SVG support in browser**  
 Your browser doesn't support SVG or the support is deactivated. Please activate SVG. Alternatively you can start a pure HTML viewer (without images) using the following link.  
[Download and install SVG plugin \(Support of system administrator may be required\)](#)  
[Start HTML viewer \(without images\)](#)

Order	Pos.	Part No.	Description	Quantity
<input type="checkbox"/> 1	3.1	1421285	SEAT TUBE ASS'Y.	1
<input type="checkbox"/> 1	3.08	1421286	UPPER SEAT POST	1
<input type="checkbox"/> 1	3.2	1421287	SEAT W/HEADREST, BLACK, 18Wx16Dx18H	1
<input type="checkbox"/> 1	3.12	1421288	HEADREST, SEAT, BLACK	1
<input type="checkbox"/> 1	3.17	1421591	SAFETY BELT	1
<input type="checkbox"/> 1	3.4	1426326	ARMREST ASS'Y, LH	1

# Download SVGViewer

You can download SVG SVGViewer from Adobe web site at this URL:

<http://www.adobe.com/svg/viewer/install>



**Installing Adobe SVG Viewer**

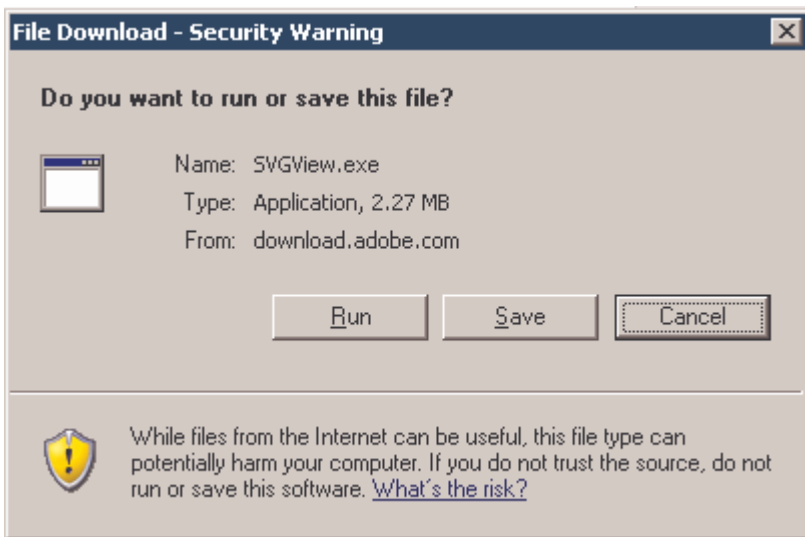
1. Double-click the downloaded installer.
2. Follow the on-screen instructions.
3. If you are not using Internet Explorer for Windows, then you will need to restart your browser before viewing SVG.

**Viewers**

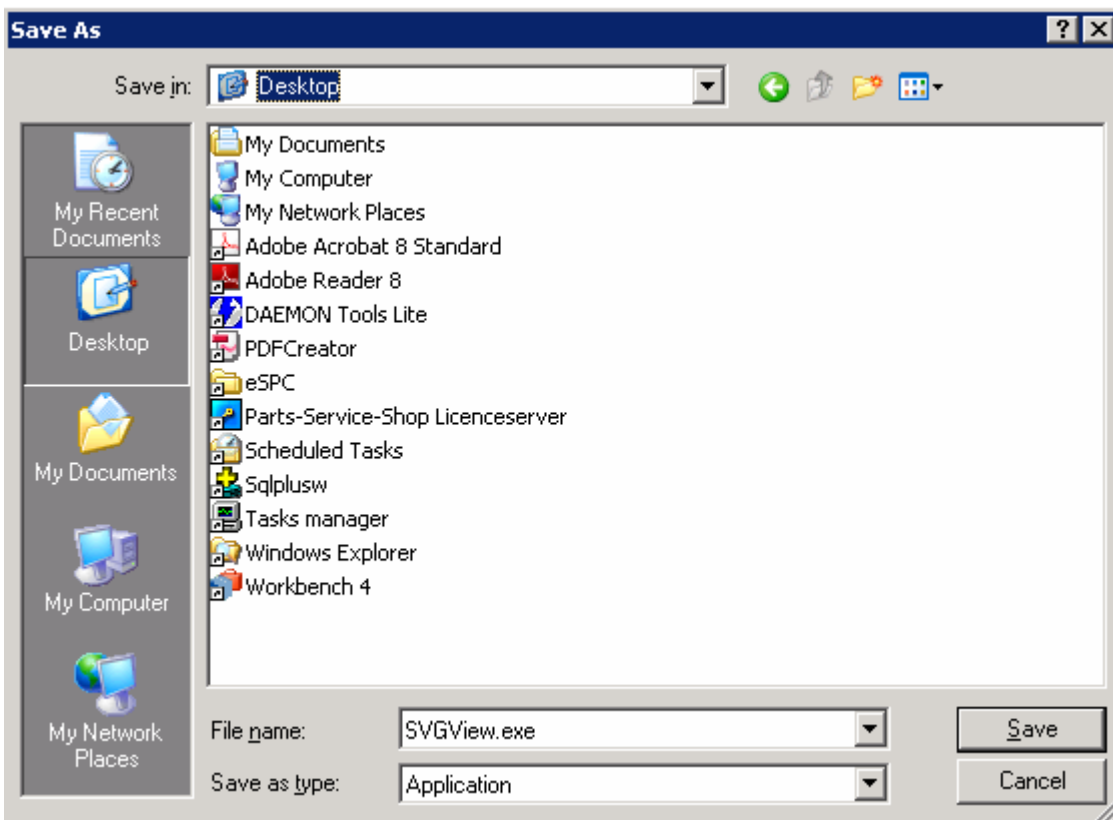
Language	Operating system	Version	Date
English	Win 98-XP	3.03	04/2005
	Mac 8.6-9.1	3.0	11/2001
	Mac 10.1-10.4	3.0	11/2001
	RedHat Linux 7.1-9e	3.01 beta 3	12/2003
	Solaris 8	3.0 beta 1	11/2001
简体中文	Win 98-XP	3.03	04/2005
	Mac 8.6-9.1	3.0	11/2001
	Mac 10.1-10.4	3.0	11/2001
繁體中文	Win 98-XP	3.03	04/2005
	Mac 8.6-9.1	3.0	11/2001
	Mac 10.1-10.4	3.0	11/2001
Český	Win 98-XP	3.03	04/2005
Dansk	Win 98-XP	3.03	04/2005
	Mac 8.6-9.1	3.0	11/2001
	Mac 10.1-10.4	3.0	11/2001
Deutsch	Win 98-XP	3.03	04/2005
	Mac 8.6-9.1	3.0	11/2001
	Mac 10.1-10.4	3.0	11/2001

Click on the link to download version 3.03 of SVGViewer in English (or in another language – depending on your computer default language).

You can save file in your Desktop for instance (like following example), or in any temporary directory.



Click on "Save"



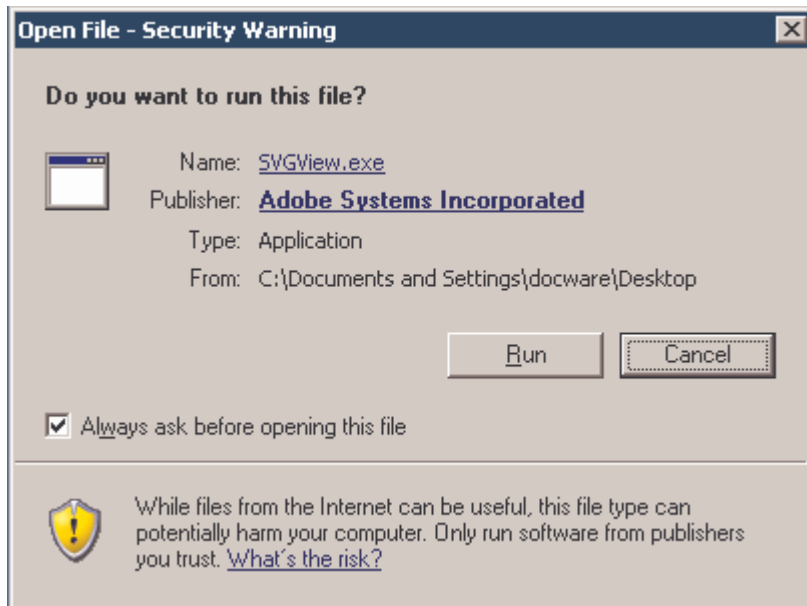
When download is completed, a new icon should appear in your Desktop like this example



## SVGViewer installation

Double click on SVGViewer.exe icon to start installation.

You might receive a security warning like this example:

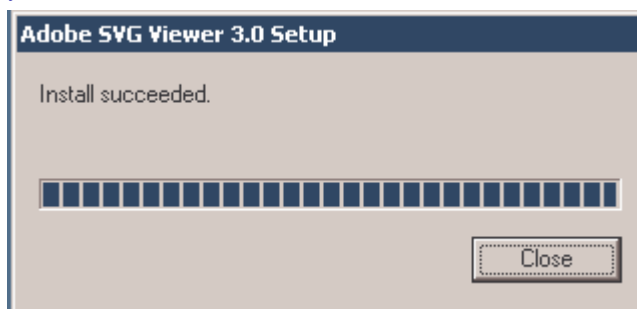


Click on "Run" to continue installation.



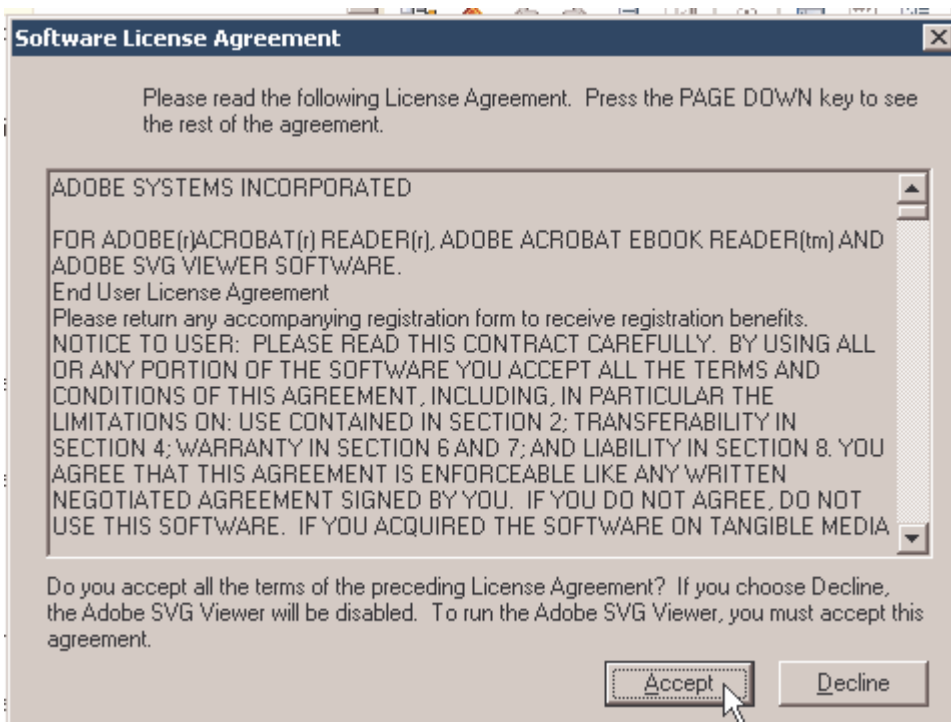
You must have « administrator access rights » on your PC to install SVGViewer. If your PC has been secured to prevent you from installing new software, you should contact your IT support who can proceed with SVGViewer installation.

Installation should take less than 2 minutes. When finished, you should receive a window like this, informing you that installation was successful.

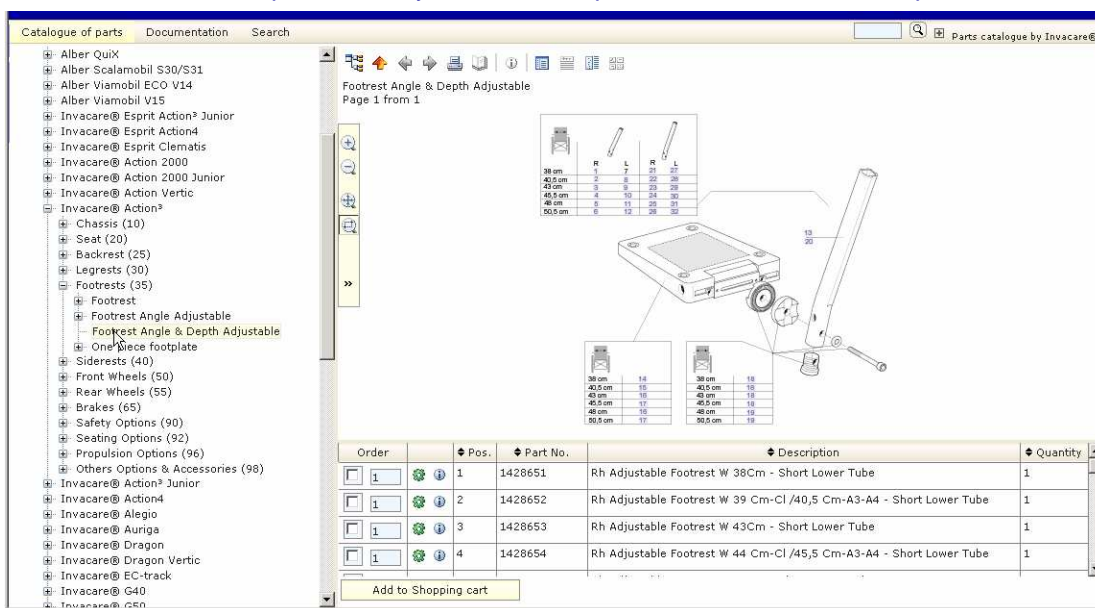


You can restart INVACARE Electronic spare parts catalogue and browse any exploded views.

First time you try to browse an exploded view immediately after installation of SVGViewer, you might receive a window like this:



Click on button « Accepter », then you can see exploded views like this example.



# In case of problem

If you can see exploded views, but hot-spots are deactivated, or icons are missing (like following example), then you might have a wrong version of SVGViewer installed.

Reservedelskatalog Dokumentation Søg Reservedelskatalog af Invacare®

PERSONLØFTERE OG TILBEHØR  
 PLEJESENGE OG TILBEHØR  
 OXYGEN OG TILBEHØR  
 ANTIDECUBITUS  
 ALLE TILGÆENGLIGE PRODUKTER

Action3  
 CHASSIS (10)  
      SIDERAMME <01/2005  
      SIDERAMME >01/2005  
 FOLDESYSTEM  
 SÆDE (20)  
 RYG (25)  
 BENSTØTTER (30)  
 FODSTØTTER (35)  
 SIDESTØTTER (40)  
 FORHJUL (50)  
 DRIVHJUL (55)  
 BREMSER (65)  
 SIKKERHEDSOPTIONER (90)  
 SÆDEOPTIONER (92)  
 FREMDRIFTSOPTIONER (96)  
 TILBEHØR (98)  
 Assist  
 Auriga  
 Azalea  
 Bellis  
 Champion  
 EC-track  
 E-Fix E25/E26  
 E-Motion  
 Focus  
 Fusion  
 K Series  
 Meteor  
 Mirage  
 Robin  
 SB750  
 SB910  
 Scalamobil S30/S31  
 Spirea 2  
 Storm3  
 Tornado  
 Typhoon  
 Viamobil ECO  
 Viamobil  
 Zephyr

SIDERAMME <01/2005  
 Side 1 fra 1

01 / 2005

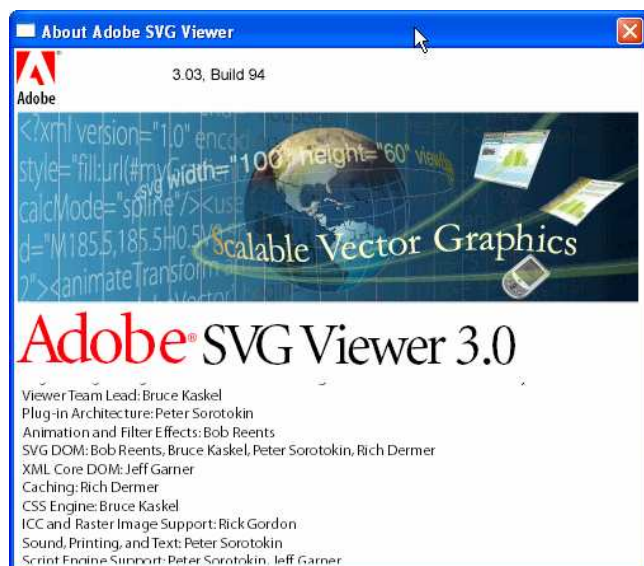
		40 cm	45 cm
Dark red	R:	6	16
	L:	7	17
Sapphire blue	R:	8	18
	L:	9	19
Anthracite black	R:	10	20
	L:	11	21
Pearl grey	R:	12	22
	L:	13	23
Purple	R:	14	-
	L:	15	-

Bestil	Position	Artikel nr	Beskrivelse	Antal
<input type="checkbox"/> 1	1	1434127	Sælges ikke i Danmark	1
<input type="checkbox"/> 1	2	1434128	Sælges ikke i Danmark	1
<input type="checkbox"/> 1	3	1418112	ACT3 PLASTIC STOPPER D22X19,5 SORT	20
<input type="checkbox"/> 1	4	0021N05386	Sælges ikke i Danmark	20
<input type="checkbox"/> 1	5	1431304	Sælges ikke i Danmark	10
<input type="checkbox"/> 1	6	1434123-0607	Sælges ikke i Danmark	1
<input type="checkbox"/> 1	7	1434124-0607	Sælges ikke i Danmark	1

You can control which SVGViewer version is installed on your PC by clicking on the right mouse button in the middle of an exploded view ; then select « About Adobe SVG Viewer »



You should see a window like this:



If SVG Viewer version mentioned is not version 3, then you must reinstall version 3 as described in this procedure.